

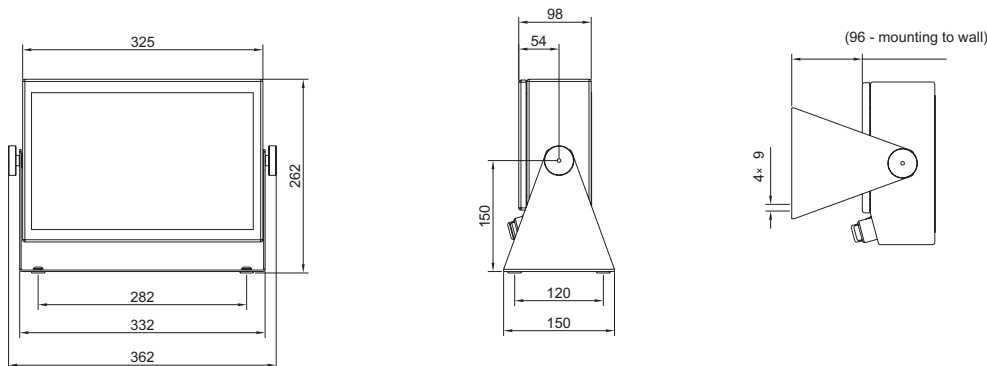
# TMC/D DOSING SCALES



Dosing systems are connected with external automatic systems including devices for controlling and operation. such devices allow for automatic, semi-automatic or manual dosing of materials in loose state or liquids. Dosing software allows for preparation of mixtures from ingredients included in recipes (dosing outputs). ingredients have their nominal mass, which are determined by the system during dosing process. downloading the data bases from supervising computer (RS, ETHERNET), simplifies functionality of the system.

Functions of dosing system:

- accessibility to data bases of: recipes, assortments and operators;
- reports from performed measurements (reports from recipes, assortments and measurements);
- printing 4-leveled reports from assortments;
- creation of headlines for reports from assortment and recipes;
- scaling masses included in recipe (multiplier of recipe mass);
- possibility of setting tarring mode for masses of particular ingredient during dosing process;
- possibility of setting means of mass confirmation after its weighing (automatic or manual confirmation);
- declaring the quantity of cycles for preparation process of a recipe;
- possibility of setting time for opening of chute for reaching minimal mass;
- possibility of aborting dosing process at any moment;
- operation with external buttons: TARE, ENTER, START, STOP, DEFECT and optional configuration of input numbers for particular button;
- optional configuration of output numbers for below functions: DOSING SIGNALIZATION, CHUTE;
- possibility of diagnosis on standard (basic) inputs/outputs status and on additional inputs/outputs status in attached modules IN/OUT;
- possibility of application up to 12 inputs and 36 outputs (optoisolated).



## Technical data:

	TMC/D 1,5/3/H1	TMC/D 3/6/H1	TMC/D 1,5/3/H2	TMC/D 3/6/H2	TMC/D 6/15/H2	TMC/D 15/30/H2
Max capacity	1,5/3 kg	3/6 kg	1,5/3 kg	3/6 kg	6/15 kg	15/30 kg
Minima load	10 g	20 g	10 g	20 g	40 g	100 g
Readability	0,5/1 g	1/2 g	0,5/1 g	1/2 g	2/5 g	5/10 g
Tare range	-3 kg	-6 kg	-3 kg	-6 kg	-15 kg	-30 kg
Pan size	150×200 mm	150×200 mm	250×300 mm	250×300 mm	250×300 mm	250×300 mm
Working temperature	-10° - +40° C					
Power supply	230V 50Hz AC					
Display	LED and LCD					

## Additional equipment:

BAR CODE READER	BUTTON FOR TARE OR PRINT FUNCTIONS
IDENTIFICATION SYSTEM WITH TRANSPONDER CARD READER	COMPUTER SOFTWARE: KTP-NET 2003